



## About Us

### **Nagel Interior Architecture, Inc.**

is a fully-licensed interior architecture, planning and design firm based in Orange County. As a LEED Accredited Professional firm and Women Owned Business Enterprise, under the direction of Jill A. Nagel, we operate with more than 30 years of experience between the partners.

Client-focused and hands-on team, we have inspired and implemented more than 10 million square feet of interiors for our valued client base consisting of office building owners, developers, commercial real estate brokers, capital equity partners, and prospective tenants.

## Our Services

### **Nagel Interior Architecture, Inc.**

provides a boutique-style which offers the full spectrum of commercial interior services from design inspiration to architectural implementation. We specialize in strategic programming, space planning, architectural drawings, city permit processing, and construction services making us your local, one-stop-shop.

Our portfolio consists of single and multi-tenant buildings, corporate and tenant improvement projects for office, finance, legal, industrial, light medical, institutional and retail businesses.

For a complete list of our professional service offerings visit our website at [www.nagelinteriorarchitecture.com](http://www.nagelinteriorarchitecture.com).



## *Distinction*

### **Nagel Interior Architecture, Inc.**

partners with each client to build and transform the corporate interior landscape. We take design from inspiration to idea through implementation.

We accomplish this by collaborating with our client to create effective design both aesthetically and strategically and then delivering on that design with constant consideration towards budget and time.

What sets us apart is our big business ability with our small business care and commitment to our clients to design and deliver the best built interior environment suitable for their business needs.

**Inspiration. Idea. Implementation.**

# Nagel Notes

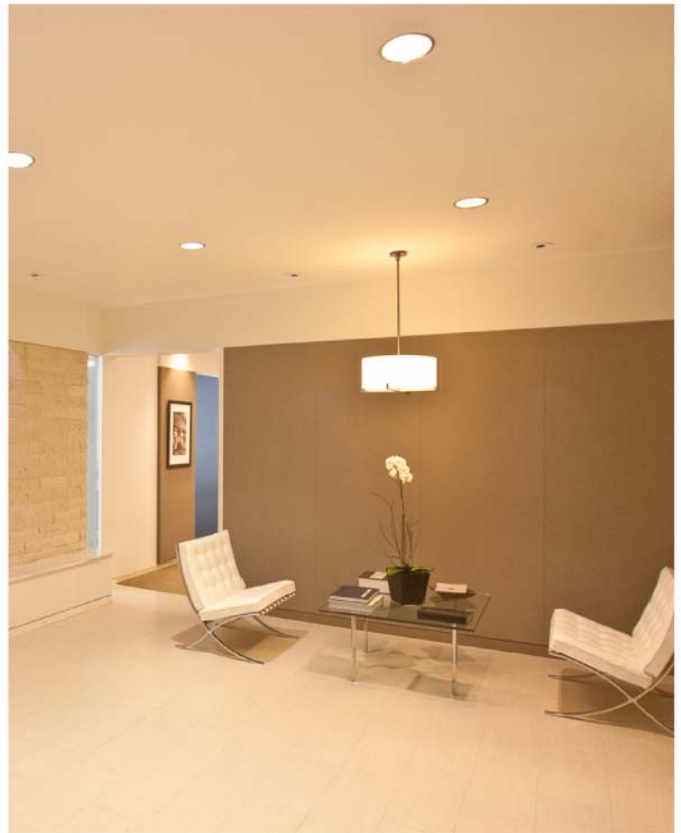
**Nagel Interior Architecture, Inc.** strongly believes that design provides an opportunity to enhance and influence productivity, sustainability, health & safety, creativity, and the corporate brand. Closely aligned with this belief are our corporate values under which we operate to better service our clients. We believe that a trusted business relationship starts here.

**Design-to-Suit.** *Design with you in mind.* We provide effective design through vision and strategy to personalize and promote your interior space giving your company that competitive edge.

**Client Focused.** *We roll up our sleeves.* We deliver principal involvement to all of our clients and cater our services to meet your needs from design inception to architectural completion we are a one-stop-shop.

**Standards of Care.** *Ability not disability.* We are dedicated at all times to deliver code-compliant spaces that are designed to ability and follow the industry standards to safeguard public health, safety, and welfare.

**A Green Footprint.** *Although it's not easy being green.* We encourage environmentally-thoughtful design as a LEED accredited professional firm with a focus on products and methodologies that lessen the environmental impact in the workplace.



*Front & back photos of work developed in a prior relationship, but listed to demonstrate design ability and quality of projects.*

Inspiration.

Idea.

Implementation.



949.715.8220

580 Broadway, Suite 116

Laguna Beach, CA 92651

[info@nagelinteriorarchitecture.com](mailto:info@nagelinteriorarchitecture.com)

*"Effective design originates from inspiration and is realized through implementation. Our design service goal as a firm is to thoughtfully create and deliver the most effective design for each and every client we serve."*

*~ Jill A. Nagel*

